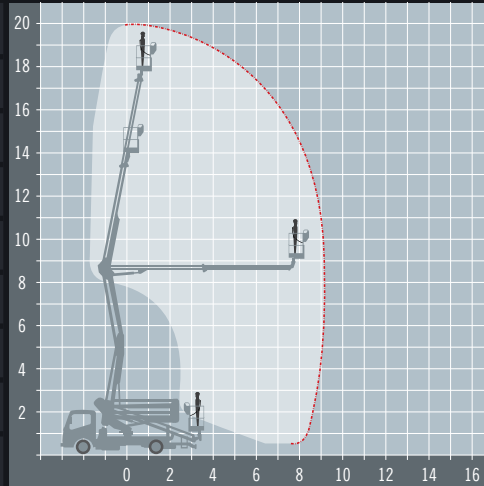






# ISOLI PNT205N

## Truck mounted boom

REACH HEIGHT	20 m
PLATFORM HEIGHT	18 m
UP AND OVER	8.5 m
HORIZONTAL REACH	9.1 m
STOWED HEIGHT	2.5 m
DEPLOYED WIDTH	2.98 m
PLATFORM SIZE	1.4 x 0.71 m
WEIGHT	3,500 kg
LIFT CAPACITY	230 kg



Stowed travel size is 6.2 x 1.65 m (20' 4" x 5' 5")

-  **DIESEL POWERED**  
Perfect for external applications
-  **OUTDOOR RATED**  
Wind rated for outdoor use
-  **LEVELLING STABILISERS**  
Levels the machine for use on uneven ground
-  **IPAF 1b**  
Requires IPAF category 1b

The Isoli PNT 205N truck mounted access platform is perfect for multi-site roadside work or access in tight spaces. Its quick and easy to set up and incorporates a dual articulating boom with a telescopic upper boom that provides great reach from a compact 3,500 kg chassis. At just 3.5 tonne this self drive vehicle can be driven on a standard car licence.

## A range of extra's for 'Hire or Purchase' designed to give you the GTAdvantage™

-  **DOUBLE POINT HARNESSSES TO KEEP YOU SAFE AT HEIGHT**
-  **SPREAD THE LOAD WITH THE RIGHT SIZE SPREADER PLATES**
-  **REFUEL ON-SITE THE EASY WAY WITH A FUEL BOX!**
-  **OPERATOR TRAINING FOR THIS ACCESS PLATFORM**
-  **PROTECT SENSITIVE GROUND WITH 'GROUND GUARDS'**
-  **REMOVE THE RISK WITH GTA ALL RISK COVER**

Find out more about the 'GTAdvantage' extras at [gtaccess.co.uk](http://gtaccess.co.uk)

